

*Comprehensive end-to-end management for your infrastructure and applications, to include the IBM iSeries (AS/400) environments*

Integrate the IBM iSeries (AS/400) environment seamlessly as part of a unified Microsoft System Center Operations IT Operations platform.

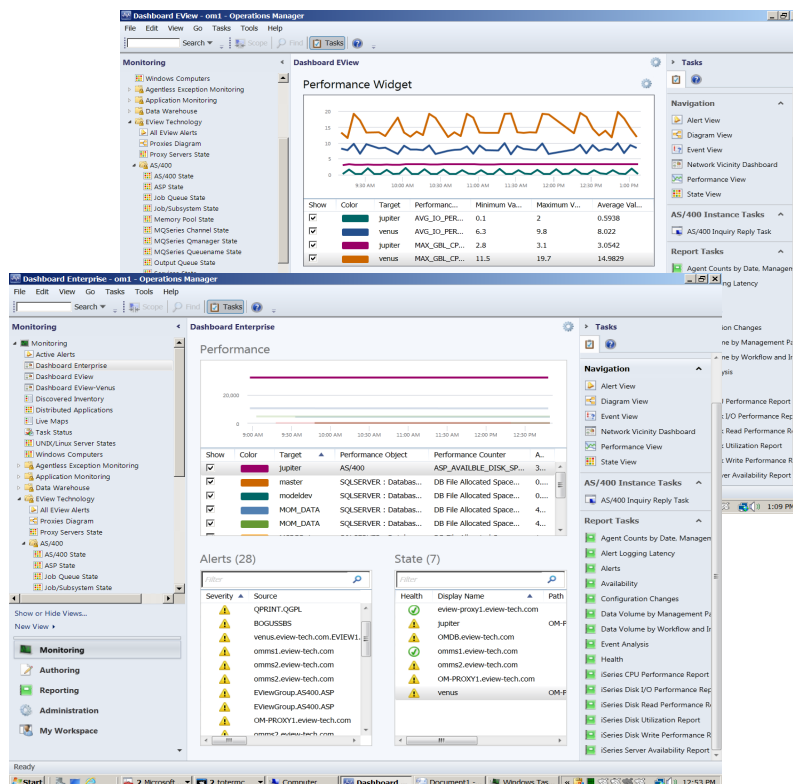
New, EView/400i Management v7.1 adds significant enhancements including new job monitors, extended automation, and nearly plug-and-play installation and set up.

EView/400i Management is the most advanced and comprehensive Management Pack for managing the IBM iSeries (AS/400) environments.. EView/400i works seamlessly with System Center to integrate event and system performance and monitoring the status and health of the OS400 system and its standard applications.

If your IT infrastructure is like that of most organizations, you have physical and virtual resources running heterogeneous operating systems, including IBM iSeries (AS/400) server environments. Traditionally, these key IBM systems have been managed as their own entity.

EView/400i Management addresses and resolves these issues by seamless integration of IBM iSeries (AS/400) server environments to be part of the managed IT enterprise ecosystem via the Microsoft Systems Center platform. Using System Center's integrated and automated management capabilities, to include the iSeries (AS/400) environments; IT Operations can become a trusted service provider for your business.

With EView's seamless integration into System Center Dashboards, IT Operations can leverage a single enterprise console and customizable dashboards in Operations Manager to monitor and manage the physical, virtual, networking, application, and cloud resources, including the iSeries (AS/400). EView/400i agents capture system performance statistics, system and application messages, and security related events from the system audit journal and communicates information to the EView/400i proxy server. The result of this integration with Microsoft System Center is IT operations can easily troubleshoot, automate, correlate diagnostic data and provide operator and/or automatic recovery.



- Seamless integration into System Center's Dashboards.
- The most advanced and comprehensive Management Pack for managing IBM iSeries (AS/400) Systems.
- Version 7.1 includes more monitors for automation, objects, thresholds, status, and connection.
- Simple Installation and a new and improved web configuration interface.
- Enhanced auditing capabilities.
- Offers compelling economic value.
- Proven technology – successfully deployed in hundreds of enterprise accounts in over 35 countries worldwide

## How It Works

EView/400i agents capture all available iSeries (AS/400) information to be included managed and monitored by System Center. This can also be used in easy to use customizable System Center (2012) Dashboards. The net result is the iSeries (AS/400) environment is managed, monitored and reported just like other server environments giving IT Operations a consistent and common tool for the entire enterprise.

The EView agent on the iSeries (AS/400) collects management data and coordinates the request and response activities to the EView agent on the System Center management server via TCP/IP.

The EView agent code is designed to collect messages and data from specific areas of the iSeries (AS/400) systems, and then send those messages on to the proxy server. Performance data is collected and stored on the data warehouse. This design improves the efficiency of the information stream.

To ensure timely problem resolution, EView Management has been designed to take automatic action, based on deployed message conditions, to address and respond to messages.

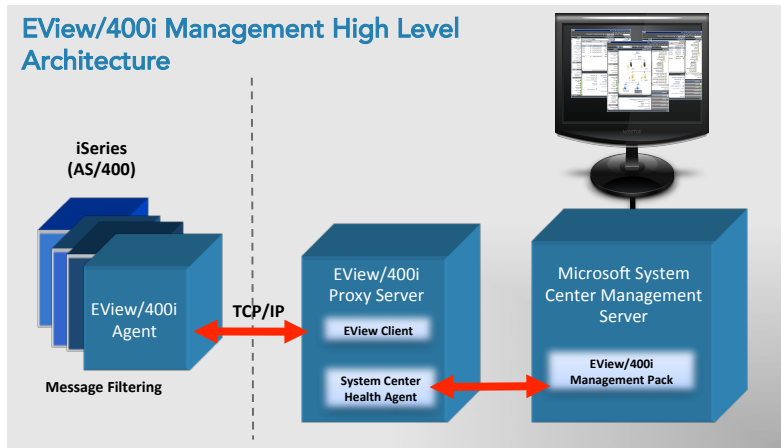
EView/400i was engineered to keep the CPU usage on the system to a minimum.

## Advanced capabilities include:

- **iSeries (AS/400) Performance Monitoring** - Monitor CPU usage, disk usage, ASP, MQ Series, response time, and other performance metrics.
- **Proactive problem detection and resolution** - two-way communication with iSeries (AS/400) systems to resolve problems quickly and automatically.
- **Automation Libraries** - Out-of-the-box filters provide a "rich starter set" for rapid implementation.
- **iSeries (AS/400) Audit Journal monitoring** - real-time monitoring and alerting when critical events occur, allowing security administrators to immediately investigate potential security related issues.
- **Automatic closing** of any iSeries inquiry message after iSeries operator has replied.
- **Interface with Various Operational Functions** - Systems administrators have the ability to interface with the iSeries (AS/400) operational information to manage the system, application jobs, output queues and spool file.

## Message Filtering and Integration

While monitoring systems like System Center collects vast amounts of data, it's not a matter of collecting the data; it's a matter of filtering and displaying the right data to the right people at the right time.



There are three primary ways of doing this; you can have alerts that tell you that something is wrong and needs attention, reports showing historical data and dashboards that show actionable, real time data in a visual fashion that can be personalized.

The EView/400i Management Pack contains hundreds of pre-defined rules to generate alerts for various important iSeries (AS/400) messages and performance thresholds. As with other System Center alerts, EView/400i makes it easy to customize discovered resources and override severities and thresholds for your environment's specific needs.

## Comprehensive Monitoring

The most advanced and comprehensive Management Pack for managing IBM iSeries (AS/400) Systems. There are specific monitors for:

- AS/400 State
- ASP State
- Audit Journal Alerts
- Job Queue State
- Job/Subsystem State
- Memory Pool State
- Threshold Monitoring
- I/O per second
- TIMW Status
- Message Queue Alerts
- MQ Series States
- TCP Connection Status
- CMTW Status
- MTXW Status
- Output Queue State
- Services State
- Agent Connection
- Wait Status Monitoring

## Our technology partnerships

